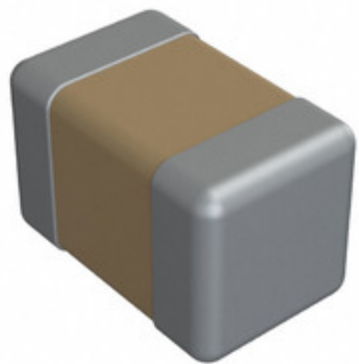


0805Y1K00180GCR



Part Number: [0805Y1K00180GCR](#)
Manufacturer: [Knowles Syfer](#)
Description: CAP CER 18PF 1KV C0G/NP0 0805
Data sheet: [MLCC Capacitor Datasheet](#)
[MLCC Catalog](#)

RoHS Status: Lead free / RoHS Compliant
Ship From: Hong Kong
Shipment Way: DHL/Fedex/TNT/UPS/EMS

Images are for reference only.
 See Product Specifications for product details.
 Buy **0805Y1K00180GCR** with confidence from
 Component-World.HK, 1 Year Warranty

[Request For Quotation](#)

PRODUCT PARAMETER

Part Number	0805Y1K00180GCR	Manufacturer	Knowles Syfer
Description	CAP CER 18PF 1KV C0G/NP0 0805	Lead Free Status / RoHS Status	Lead free / RoHS Compliant
Quantity Available	187005 pcs	Data sheet	MLCC Capacitor Datasheet MLCC Catalog
Category	Capacitors	Voltage - Rated	1000V (1kV)
Tolerance	±2%	Thickness (Max)	0.051" (1.30mm)
Temperature Coefficient	C0G, NP0 (1B)	Size / Dimension	0.079" L x 0.049" W (2.00mm x 1.25mm)
Series	FlexiCap™	Ratings	-
Packaging	Tape & Reel (TR)	Package / Case	0805 (2012 Metric)
Operating Temperature	-55°C ~ 125°C	Mounting Type	Surface Mount, MLCC
Moisture Sensitivity Level (MSL)	1 (Unlimited)	Manufacturer Standard Lead Time	8 Weeks
Lead Spacing	-	Lead Free Status / RoHS Status	Lead free / RoHS Compliant
Height - Seated (Max)	-	Features	Soft Termination
Failure Rate	-	Detailed Description	18pF ±2% 1000V (1kV) Ceramic Capacitor C0G, NP0 (1B) 0805 (2012 Metric)
Capacitance	18pF	Applications	Boardflex Sensitive

Component-World.com is a Reliable Stocking Distributor of Electronic Components. We specialize in all Knowles Syfer series electronic components. We have 187005 pieces of Knowles Syfer 0805Y1K00180GCR in stock available now. Request a quote from electronics components distributor at Component-World.com, our sales team will contact you within 24 hours.
 RFQ Email: info@Components-World.com

RELATED PRODUCTS

	Part#: 0805Y1K00151MXT Description: CAP CER 150PF 1KV X7R 0805	Manufacturers: Knowles Syfer	RFQ
	Part#: 0805Y1K00180FCT Description: CAP CER 18PF 1KV C0G/NP0 0805	Manufacturers: Knowles Syfer	RFQ
	Part#: 0805Y1K00152KXT Description: CAP CER 1500PF 1KV X7R 0805	Manufacturers: Knowles Syfer	RFQ
	Part#: 0805Y1K00152MXR Description: CAP CER 0805	Manufacturers: Knowles Syfer	RFQ
	Part#: 0805Y1K00181KXR Description: CAP CER 180PF 1KV X7R 0805	Manufacturers: Knowles Syfer	RFQ
	Part#: 0805Y1K00180GCT Description: CAP CER 18PF 1KV C0G/NP0 0805	Manufacturers: Knowles Syfer	RFQ
	Part#: 0805Y1K00181JXR Description: CAP CER 180PF 1KV X7R 0805	Manufacturers: Knowles Syfer	RFQ
	Part#: 0805Y1K00181JXT Description: CAP CER 180PF 1KV X7R 0805	Manufacturers: Knowles Syfer	RFQ
	Part#: 0805Y1K00180KCT Description: CAP CER 18PF 1KV C0G/NP0 0805	Manufacturers: Knowles Syfer	RFQ
	Part#: 0805Y1K00181KXT Description: CAP CER 180PF 1KV X7R 0805	Manufacturers: Knowles Syfer	RFQ
	Part#: 0805Y1K00152JXT Description: CAP CER 1500PF 1KV X7R 0805	Manufacturers: Knowles Syfer	RFQ
	Part#: 0805Y1K00151MXR Description: CAP CER 150PF 1KV X7R 0805	Manufacturers: Knowles Syfer	RFQ
	Part#: 0805Y1K00152MXT Description: CAP CER 1500PF 1KV X7R 0805	Manufacturers: Knowles Syfer	RFQ
	Part#: 0805Y1K00181MXR Description: CAP CER 180PF 1KV X7R 0805	Manufacturers: Knowles Syfer	RFQ
	Part#: 0805Y1K00180KCR Description: CAP CER 18PF 1KV C0G/NP0 0805	Manufacturers: Knowles Syfer	RFQ
	Part#: 0805Y1K00152KXR Description: CAP CER 1500PF 1KV X7R 0805	Manufacturers: Knowles Syfer	RFQ
	Part#: 0805Y1K00180FCR Description: CAP CER 18PF 1KV C0G/NP0 0805	Manufacturers: Knowles Syfer	RFQ
	Part#: 0805Y1K00152JXR Description: CAP CER 0805	Manufacturers: Knowles Syfer	RFQ
	Part#: 0805Y1K00180JCR Description: CAP CER 0805	Manufacturers: Knowles Syfer	RFQ
	Part#: 0805Y1K00180JCT Description: CAP CER 18PF 1KV C0G/NP0 0805	Manufacturers: Knowles Syfer	RFQ

Related keywords for 0805Y1K00180GCR

Knowles Syfer 0805Y1K00180GCR	0805Y1K00180GCR distributor	0805Y1K00180GCR supplier	0805Y1K00180GCR price
0805Y1K00180GCR download datasheet	0805Y1K00180GCR datasheet	0805Y1K00180GCR stock	buy 0805Y1K00180GCR
Knowles Syfer 0805Y1K00180GCR	Syfer 0805Y1K00180GCR		